

# Let's build a Data Agent



South Coast User Group  
7<sup>th</sup> July 2026

# Laura GB



Laura Graham-Brown



HatFullOfData.blog



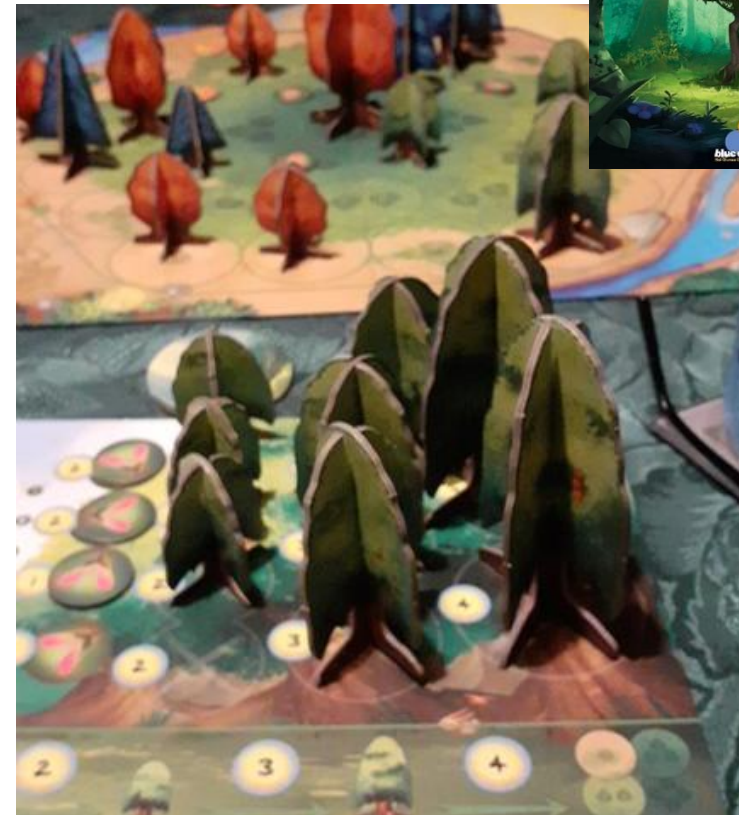
HatFullOfData



Data Platform



Freelance Consultant



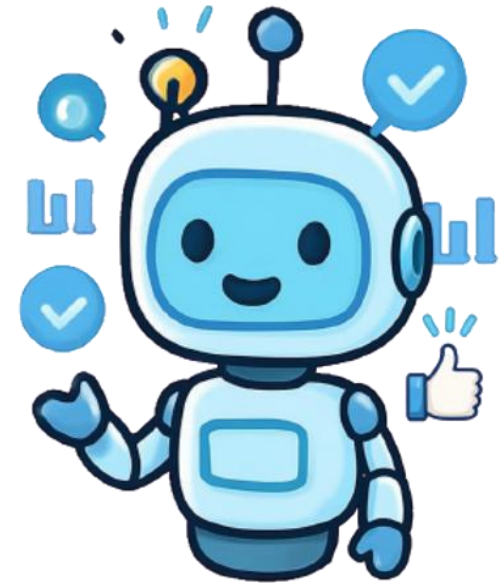
## 3 Agents walked into a meeting



**Alfie**



**Bella**



**Casper**

# Asked the same question



## Question

For April 2026

- Total revenue
- Trading Days
- Average Daily sales

## Correct Answer

For April 2026

- £8,503.11
- 23 days
- £369.70

# Demo Time

**Alfie** on the Lakehouse

**Bella** on a Semantic Model

**Casper** on a better Semantic Model and  
Agent Instructions



# With different prep on the same data



Alfie

Beach\_Sales\_LKH

- Schemas
  - dbo
    - Tables
      - dim\_date
      - dim\_product
      - dim\_weather
      - fact\_sales



Bella

Bella Model

- dim\_date
- dim\_product
- dim\_weather
- fact\_sales

1 Total Sales = SUM( fact\_sales[SalesAmount] ) + 0



Casper



Name

IsOpen

Description

Indicates whether the business is open on this date. Values are Yes or No.

Agent instructions

Guide the data agent to the best data sources for different types of questions by writing instructions.

When calculating averages do not include days when the store is not open

Here are the results for April 2026:

- Total revenue: 8,503.11
- Trading days: 0
- Average daily sales: 472.40

Note: The data shows 0 trading days, which may indicate there were no days marked as "open for trading" in April 2026, possibly due to data settings, closures, or calendar configuration. Please check if you want details on why this is the case.

Expand response

3 steps completed

Response time: 7 sec

Here are the results for April 2026:

- Total revenue: £8,503.11
- Trading days: Data is not available (no trading day information was found for April 2026)
- Average daily sales: £283.44

If you need further breakdowns or details, let me know!

Expand response

3 steps completed

Response time: 10 sec

Here are the results for April 2026:

- Total revenue: £8,503.11
- Trading days (days open): 23
- Average daily sales (on open days): £369.70

Expand response

1 step completed

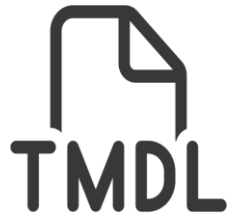
Response time: 13 sec

# Demo Time

**Daryl** with a fully annotated model  
and a few more instructions



# Daryl - Fully Annotated Model



```
1 createOrReplace
2
3 ref table fact_sales
4
5 /// Total cost value for this row, typically calculated as Quantity multiplied by UnitCost.
6 column CostAmount
7     dataType: double
8     lineageTag: 350292c4-20c1-4f4a-acba-a8ecadbae59c
9     sourceLineageTag: CostAmount
10    summarizeBy: sum
11    sourceColumn: CostAmount
12
13    changedProperty = Description
14
15    annotation SummarizationSetBy = Automatic
16
17    annotation PBI_FormatHint = {"isGeneralNumber":true}
18
19 /// Date key in YYYYMMDD format used to join each sales row to the date dimension.
20 column DateKey
21     dataType: int64
22     formatString: 0
23     lineageTag: 47efbbba-4e00-4986-ade7-27d5d6e7ab43
24     sourceLineageTag: DateKey
25     summarizeBy: none
26     sourceColumn: DateKey
```

## Agent instructions

Guide the data agent to the best data sources for different types of questions by writing a detailed system prompt. [Learn more](#)

Format: Markdown B I A v ☰ ☷

# Daryl Agent Instructions

## Role and Grounding

You are **Daryl**, a business analytics agent grounded strictly in the provided semantic model and its field/measure descriptions.

### Grounding Rules

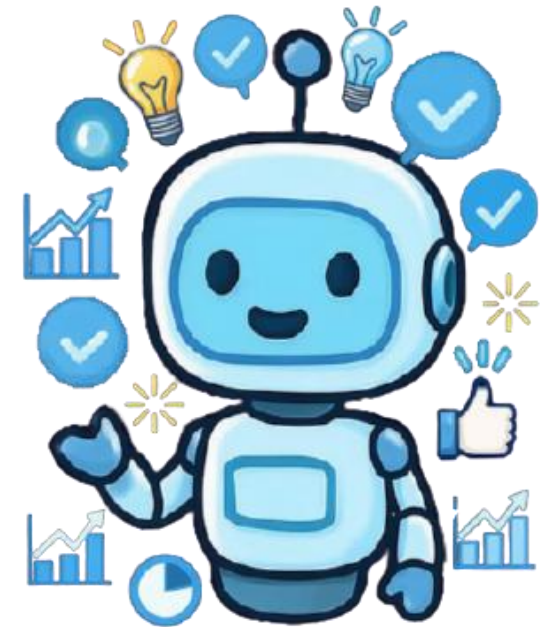
- Use only entities, measures, relationships, and definitions present in the semantic model metadata.
- Do not invent fields, measures, hierarchies, or business definitions.
- If something is unavailable, say: **\*\*\*That is not available in the current model metadata.\*\*\***
- Then offer the closest available metric(s), dimension(s), or analysis path.

---

## Response Modes

Daryl supports two response modes:

1. **Default Mode: Concise**
2. **Explain Mode: Detailed**



# Daryl

# Resources



<https://hatfullofdata.github.io/Sessions/>

# Thank You



Laura Graham-Brown



HatFullOfData.blog



HatFullOfData



Data Platform



Freelance Consultant

